

Complete Water Soluble Fertilizers

Designed for modern strawberry production, complete feeds containing NPK in various ratios together with magnesium and **fully chelated trace elements** (see bottom right, page 4). Also formulations that comply with the particular needs of crops grown in increasingly popular coir-based growing media.

PLUS, Bespoke feeds – as unique as your crop.

We can formulate a water soluble fertilizer to the specification required - suiting your crop, location and growing conditions, meeting your feed targets exactly.

A bespoke feed provides optimised crop nutrition, with less waste and greater economy.

The Benefits

Solufeed – The original and still the best!

- ❖ Wide range of (standard + bespoke) formulations to suit every growing situation.
- ❖ Manufactured and supplied to industry leading quality standards.
- ❖ Contain fully chelated trace elements for maximum stability and effectiveness.
- ❖ Contain Solufeed **Non-Stop** Technology™ for the prevention of scale and line blockages.
- ❖ Dissolves quickly and completely even in cold water.



The Details

Product	N:P:K+MgO Analysis	Use	SKU Code
Mix 1	10:8:28+4	Coir or Peat	GB0760
Mix 2	6:11:31+5	Peat	GB0761
Starter	8:14:23+6	Peat	GB0960
Fruiting	6:14:36	Peat	GB0961
Mix V3	7:6:34+5	Peat	IE0004
Coir Finisher	7:10:29+5	Coir	IE0036
Coir Special	9:12:25+7	Coir	GB0839



All water soluble fertilizers sold in the British Isles now incorporate Solufeed Non-Stop Technology™. This innovative chemistry that is built into Solufeed formulations helps prevent the troublesome problems associated with phosphate reactions such as scale formation, dripper blockages and plant mortality through water shortages. **Keeping feed lines flowing to keep plants growing!**

“It all starts with a water analysis”!

Ask about Solufeed’s analysis services - accurately determining nutrient status and giving recommendations for efficient nutrition programmes.

Chelated Micronutrients

Solufeed offer one of the widest portfolio of chelated micronutrient (trace element) fertilizers of any supplier including single metal, combis and exhaustive range of iron chelates to suit every crop and growing condition. Available as:

Liquids



Powders



Mixtures



Ask about bespoke versions of TEC™ to match your precise trace element needs.

Example Chelates for Strawberry Production

Don't let your crops disappear without trace (elements)!

- ❖ A micronutrient product fine-tuned for every application.
- ❖ High performance guaranteed.
- ❖ Solid products are highly soluble, free-flowing and dustless microgranules.
- ❖ Liquid formulations disperse instantly.
- ❖ Full technical support.
- ❖ Appropriate pack sizes for convenience and value.



The Details

Product	Analysis	Key benefit	When used	Rate of use	Pack	SKU Code
Rapid	2.0% Fe as FeEDDHA	Fast correction of iron deficiency	As required	25 mls per 100 litres of feed solution	1 litre 20 litre 1,000 litre	GB0329 GB0567 GB0568
TEC™	Chelated trace element combi	Balanced high solubility	As required	300g per 100 litre stock solution	10 kg bucket 100 litres stock solution	GB0016
TEC™-SF	Chelated trace element combi	Fe chelated by DTPA, better suited to strawberries	As required	2 kg per 100 litre stock solution	20 kg	GB0174
Fe 7 EDDHA Regular	7% Fe as EDDHA	Economical correction of iron deficiency	As required	0.75 – 1.5 kg per 100 m of row	1 kg 20 kg	GB0854 GB0154
KaliFer	13% Fe as KEDTA	Low sodium formulation	Sodium sensitive situations	Various	1 kg 25 kg	GB0343 GB0342
Single metal chelates	Ca, Cu, Mg, Mn Zn EDTA chelates	For the correction of specific trace element/ secondary nutrient deficiencies	Usually based of results of leaf or growing media analysis	Various	1 kg 25 kg	N/a

Garlic Barrier™ Products

Products that harness the natural power of garlic to increase plant resistance to disease and pest attack. Becoming more and more popular with growers seeking alternatives to synthetic pesticides.

Garberry™ 2 is a powerful foliar spray to increase resistance against aphids, whitefly and spider mites. For outdoor and protected crops.

Garshield™ for use in protected crops to encourage resistance to botrytis and mildews thereby increasing plant vigour and productivity.



Garlic treated plant (on left) showing increased mildew resistance.

The Benefits

Natural solutions for healthy crops

- ❖ Contains food grade, high quality garlic extract.
- ❖ Carefully formulated by Solufeed for trouble free application.
- ❖ Soil Association approved.
- ❖ A natural alternative to artificial pesticides.
- ❖ Biodegradable.
- ❖ Kind to the environment.

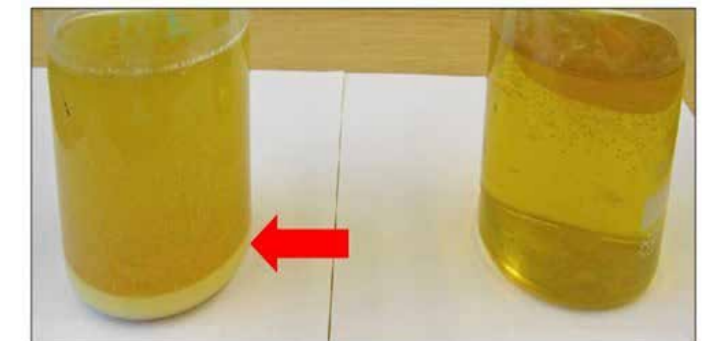


The Details

Product	Contains	Key benefit	When used	Rate of use	Pack	SKU Code
Anthyllis™	Food grade garlic extract + selenium	Encourages resistance to disease and pest attack.	During season applied via fertigation system	1:100 dilution in water	1 litre 5 litre	GB1502 GB1500
Garberry™ 2	Food grade garlic extract plus other bioactives	Encourages resistance to aphids and spider mites etc. For outdoor and protected crops.	At 7 – 10 day intervals during growing season	Dilute 1:100 and foliar spray	1 litre 5 litre	GB1509 GB1510
Garshield™	Food grade garlic extract + nutrients	Encourages resistance to mildews and botrytis in protected crops.	At 7 – 10 day intervals during	Dilute 1:100 and foliar spray growing season	1 litre 5 litre	GB1504 GB1503

Why “Fully chelated trace elements”?

Chelation is a clever bit of chemistry that prevents reactions taking place between certain trace elements and phosphates when a feed is dissolved in water to make up a stock solution. In cheap, poor quality feeds where the trace elements are unchelated or partially chelated, there is a relentless tendency for these reactions to take place causing in the wasteful precipitation of insoluble compounds (Left hand beaker). By contrast the trace elements in Solufeeds are fully chelated resulting in a clear stock solution (Right hand beaker) with everything fully dissolved and all nutrients available for root uptake.



Clarity = performance!

Other Complimentary Products for Strawberry Production

A selection of speciality products from Solufeed to help growers 'go the extra mile' and improve crop yields, quality and profitability.

Sea-King Crop Quality Enhancer

Calcium and magnesium with organic fulvic acid and organic *ascopyllum* seaweed extract.

Uses

A nutritional supplement to boost crop quality and plant health.

Benefits

- ◆ Strengthens cell walls to provide firmer produce with a longer shelf life.
- ◆ Develops deep green foliage to maximize photosynthesis.
- ◆ Allows roots to absorb nutrients more efficiently.
- ◆ Feeds beneficial bacteria in the root zone that are working to protect and feed the plant.
- ◆ A natural biostimulant to maximize plant development and harvest yield.

Analysis

	%w/w	%w/v
Nitrogen (N)	7.0	9.5
Magnesium as MgO	3.7	5.0
Calcium as CaO	8.3	11.2
Natural fulvic acids	1.4	2.0
<i>Ascophyllum</i> extract	3.6	5.0

Appearance: Brown opaque free flowing liquid.

Application Rates:

Tractor Sprayer: 5.0 – 10 litres per hectare in sufficient water to ensure good coverage.

Knapsack Sprayer: 50 ml per 10 litres of spray solution.

Fertigaton: 1 litre per 1,000 of irrigation water.

Packaging: 10 litre drums SKU GB1541



Solupotasse™

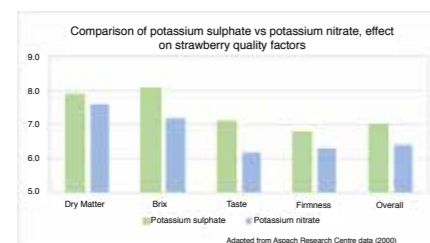
Extra-Soluble fertigation grade potassium sulphate.

Uses

To provide a source of soluble, chloride-free potassium (K) fertilizer for use in fertigation and hydroponics.

Benefits

- ◆ Dissolves more rapidly than traditional glasshouse grade potassium sulphate.
- ◆ Provides potassium *without* also providing nitrogen (N) (as happens with potassium nitrate).
- ◆ Contains sulphur (S) in sulphate form – the only form to be taken up by the plants.
- ◆ Very low conductivity (EC) means you can add more K without making the feed too "salty".



Analysis
0:0:50

Appearance: White free-flowing powder.

Application rates: Varies according to crop, time etc.

Packaging: 25 kg bags, SKU GB0024



Signal UK

A water soluble and biologically available source of silicon.

Uses

To prevent and correct silicon deficiency in many agricultural, horticultural and ornamental crops.

Benefits

- ◆ Improves the silicon status of crops.
- ◆ Improves plant cell integrity.
- ◆ Believed to increase disease and pest resistance.
- ◆ Supplied as a convenient easy to use liquid formulation.
- ◆ Contains potassium, for maximum effectiveness.

Analysis (w/w):

Silicon dioxide (SiO₂) soluble in water 30.8% (Si: 14.3%)
Potassium oxide (K₂O) soluble in water 21.1% (K: 17.6%)

Appearance: Viscous liquid.

Application rates:

Foliar: 20 ml per 10 litres of water and spray to run-off.

Via irrigation system: Usual rate 10ml per 1000 litres of irrigation water.

Packaging:

10 litre drums SKU GB1153



About Solufeed

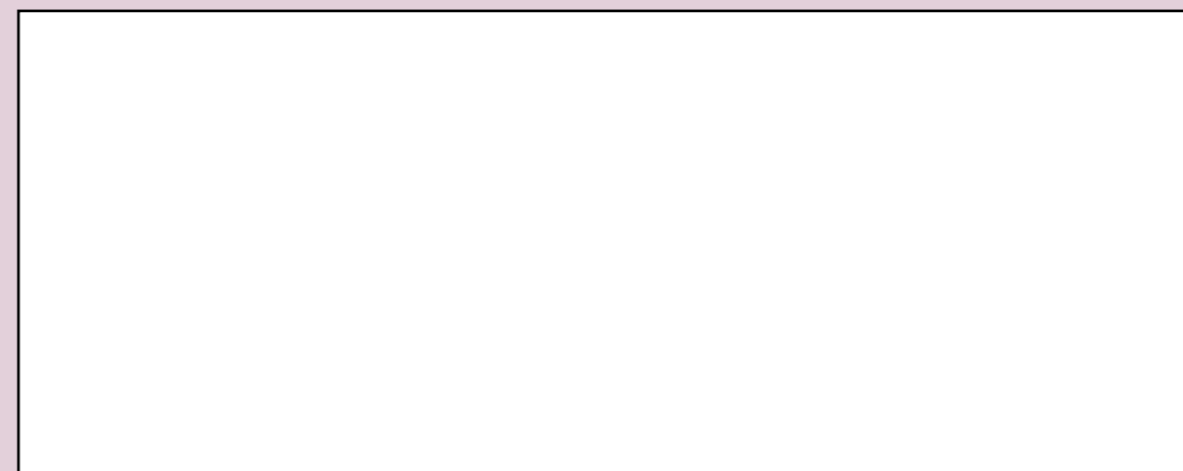
First registered in 1946, Solufeed was the brand name of a single ICI fertilizer for the then infant hydroponics industry. The Solufeed brand now embraces hundreds of products sold throughout the world. Products with a reputation for quality, reliability and value and the choice for today's discerning Grower.

Today the company is in independent ownership, focusing on specialty fertilizers for the agriculture, horticulture and amenity sectors. The product range has expanded still further and the company exports to more than 40 countries across the world.

In recent years Solufeed has also become engaged in more innovative methods of improving crop production. Garlic-based products to promote pest and disease resistance and microbial soil amendments to increase root zone health, for example. With some UK Soil Association approved, they are of special interest to the organic grower.

As well as only the very highest quality raw materials used in their production, Solufeed products are supported by stringent quality control systems and enviable technical and customer services.

Get your supplies from:



More information - www.solufeed.com

The information in this document has been prepared carefully and is provided in good faith. The application, use and processing of any material together with regulatory compliance is the absolute responsibility of the Buyer. All technical information or other advice provided by the Seller in any form is given without warranty to the full extent provided by law.

Please note that products may differ or be unavailable in certain territories.

Copyright ©2017 Solufeed Ltd.

Anthyllis, Garberry, Garlic Barrier, Garshield, Solufeed, Solufeed Non-Stop Technology, TEC and the wavy parallelogram device are trademarks of Solufeed Ltd and registered in relevant countries.

Solupotasse is a trade mark of Tessenderlo Chemie NV/SA



Solufeed Ltd
Highground Lane Barnham
West Sussex PO22 0BT UK
Tel: +44(0)1243 554090
Fax: +44(0)1243 554568
enquiries@solufeed.com



Certain products only



For Profitable Strawberry Production

