



Solufeed Rapid

Chelated iron fertilizer

*Speciality high performance liquid
formulation of Fe EDDHSA*

Uses

For the speedy, 'emergency' correction of iron deficiency when symptoms appear in a growing crop.

As an efficient iron source in hydroponics and fertigation systems particularly where low pH stock tanks are employed.

A high performance iron chelate to prevent and correct iron deficiency in most, horticultural and ornamental crops growing in high pH conditions.

Especially recommended where the correction of iron deficiency is agronomically critical to achieve crop quality and profitability.

Benefits

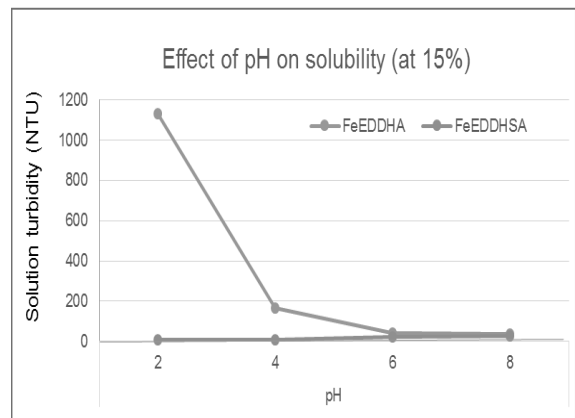
Contains 2.0 % water soluble iron chelated by EDDHSA, 95% of which is chelated by the most biologically effective *ortho-ortho* isomer.

Remains physically in solution at very low pH levels so ideal for adding to acidified "A" stock tanks.

High chemical stability therefore suitable for use in calcareous, high pH (up to 9.0 and above) soils.

Compatible with soluble phosphates thereby remaining effective in hydroponics and liquid feed systems.

Supplied as an easy to use liquid formulation.



Graph illustrating that the solubility of Fe EDDHSA is unaffected by low pH. Solution turbidity is a measure of the presence of undissolved, inactive material.

Analysis

EC FERTILISER

A liquid formulation of potassium ferric ethylenediamine bis-(2-hydroxysulphonylphenyl acetate) (Fe EDDHSA K) containing:

Water soluble Fe:	2.0 %
Fe chelated by EDDHSA:	2.0 %
Fe chelated by <i>o-o</i> EDDHSA	1.9 % minimum

Practical pH stability range: 4 – 9 (in aqueous solution)

Chemical/physical data

Appearance:	Dark red/brown liquid
Solubility:	Completely miscible in water
Specific gravity:	1.32
Harmonised Tariff No:	2922500090

Directions for use

Emergency remediation of iron deficiency

For ornamentals, nursery stock and similar crops apply a drench containing 25 mls *Solufeed Rapid* per 100 litres of water. Repeat up to three times at 5 – 7 day intervals or until symptoms improve. Thereafter revert to the normal feeding regime but keep monitoring the crop.



Hydroponics/fertigation nutrient solutions

1ppm (17.86mmol/l) iron can be achieved by adding 39 mls of *Solufeed Rapid* per 1,000 litres of final feed solution.



Soil application

Crop	Rates of Use
Field Crops	4.5 – 10 l/ha
Citrus Young Trees Mature Trees Annual Maintenance	0.9 – 1.4 l per 100m ² 0.3 – 1.0 l per tree 180 – 300 mls per tree
Top Fruit	Apply 45 - 225 mls per tree.
Soft Fruit	Apply 1.4 – 1.8 litres per 100 metres of row in a band or as a side dressing.

Ornamental Shrubs	Apply 35 - 90 mls per bush.
Ornamental Plants	Apply 115 mls per 10 m ² .

These rates indicate upper and lower limits. Actual amounts used will depend upon the size of the crop and the degree of deficiency or both.

The best way to add *Solufeed Rapid* to the soil is to mix with a convenient amount of water (e.g 20 mls per litre) then apply as a coarse low pressure spray. If the soil is densely compacted, the surface should be broken up before application.

Applications should always be incorporated into the top few centimetres of soil as soon as possible after application. This can be done by harrowing or hoeing in, or by irrigation. For deep-rooting trees and shrubs, *Solufeed Rapid* solution may be applied to the root-feeding zone using a pressure injector.

Solufeed Rapid may also be applied through irrigation systems by periodically adding the equivalent of 3.0 litres per hectare in 10,000 litres of water. Frequency of addition will depend on the degree of deficiency.

Timing

In general, application timing should ensure that the chelate is in the root feeding zone at the required time such as onset of seasonal growth.

For annual field crops, apply just before sowing/planting or when iron deficiency symptoms begin to appear.

General information

Solufeed Rapid gives best results when crops have adequate supplies of water and major nutrients and are not under stress for any other reason. Conditions that are responsible for one particular deficiency can also induce deficiencies of other micronutrients. Always ensure that deficiencies are confirmed before treatment is carried out.

Mixing With Water

Simply add the liquid to water while it is being agitated. Continue agitation for a short while to ensure complete dissolution.

Compatibility

Solufeed Rapid is compatible with other *Solufeed* chelates and with solutions containing soluble phosphates such as liquid feeds.

Technical service

Please contact Solufeed at the address below for assistance.

Packaging

12 x 1 litre polythene bottles, 20 litre polythene drums.

Precautions

Statutory Caution: To be used only where there is a recognised need. Do not exceed the appropriate dose rate.

No health hazard is involved when *Solufeed Rapid* used as directed

No special precautions are necessary for transport by air, sea, rail or road.

Storage

Solufeed Rapid should be protected from frost and kept in a heated warehouse, use within 12 months.

Re-seal partly used packs tightly.

Detailed health and safety information may be found on the relevant Material Safety Data Sheet (MSDS) available on request from the address below. This should be read fully before use.

Important

The information in this document has been prepared carefully and is provided in good faith. The application, use and processing of any material together with regulatory compliance is the absolute responsibility of the Buyer. All technical information or other advice provided by the Seller in any form is given without warranty to the full extent provided by law.

Please note that products may differ or be unavailable in certain territories.

Copyright ©2014 Solufeed Ltd.

Solufeed and the wavy parallelogram device are trademarks of Solufeed Ltd and registered in relevant countries.



Certificate No. FS 573717



Solufeed Ltd
The Depot
Chichester Road
Sidlesham Common
Chichester
West Sussex PO20 7PY
Tel: +44(0)1243 554090
enquiries@solufeed.com
www.solufeed.com